

CVFV

VERTICAL, CENTRIFUGAL, MULTI-STAGE PUMPS

APPLICATION

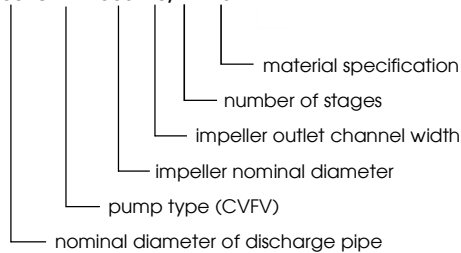
- for water supply systems and pumping from water wells
- industrial utility water supply
- auxiliary technological applications
- for pumping condensate, cooling water, etc.

WORKING CONDITIONS

- for pumping drinking and utility water
- max. contents of impurities: 5g/l of water, max. particle size: 0,5 mm
- medium temperature up to +60°C

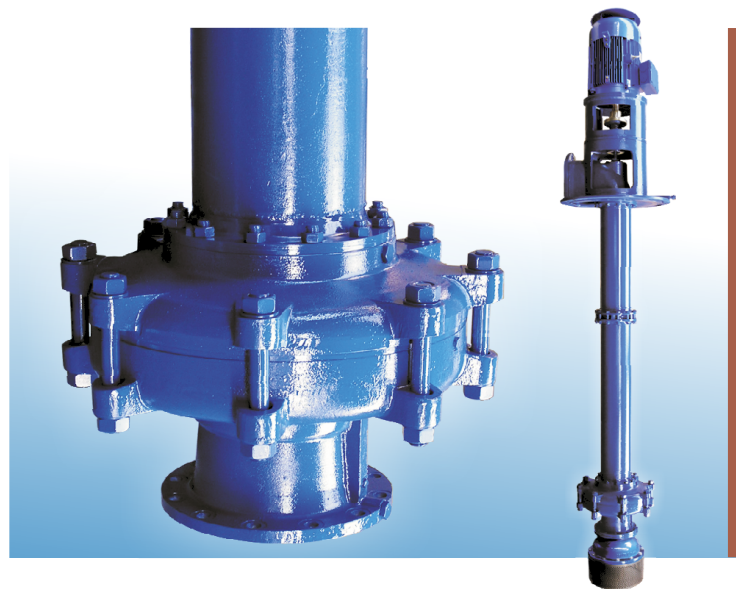
TYPE IDENTIFICATION

200-CVFV-305-40/2 - LU



WORKING AREA

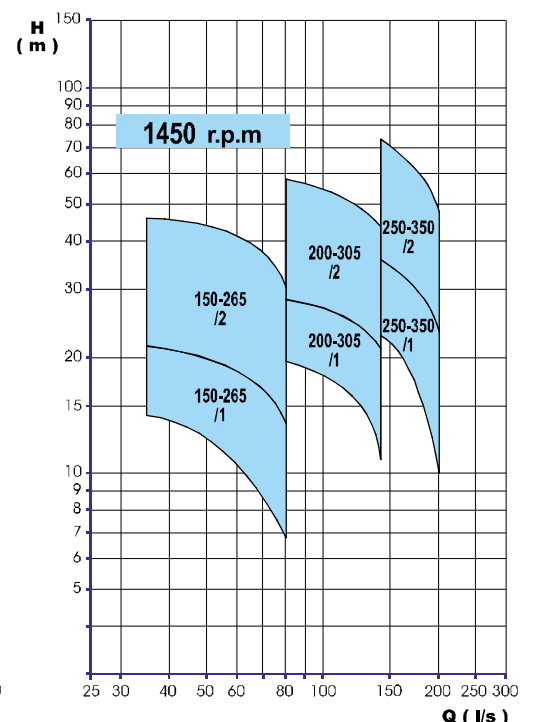
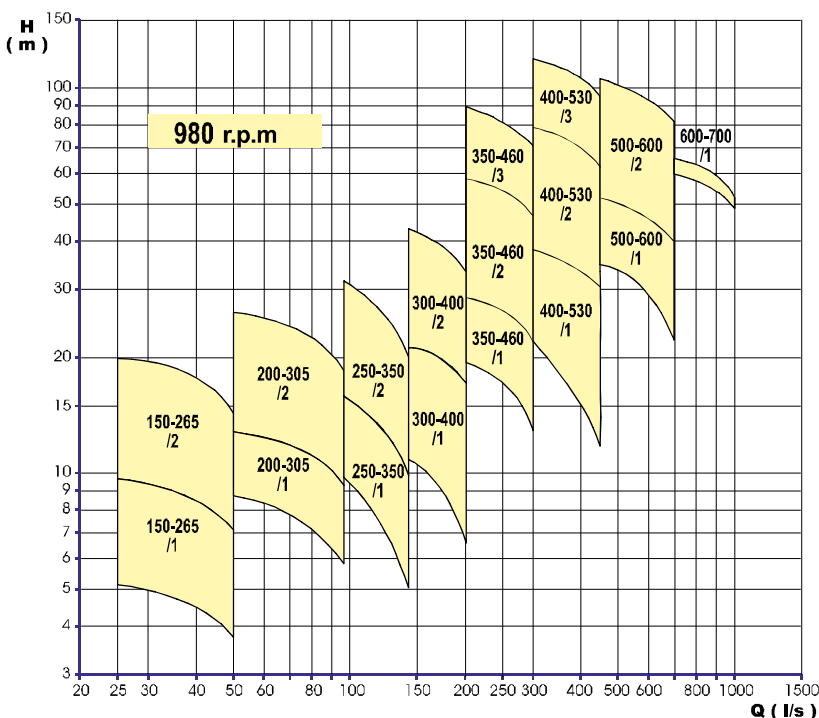
PUMP SIZE	SHAFT SPEED (r.p.m.)	FLOW Q (l/s)	DELIVERY HEAD H (m)	TEMPERATURE MAX. (°C)
from 150-CVFV-265 to 600-CVFV-700	from 980 to 1450	from 52 to 800	from 9 to 89	60



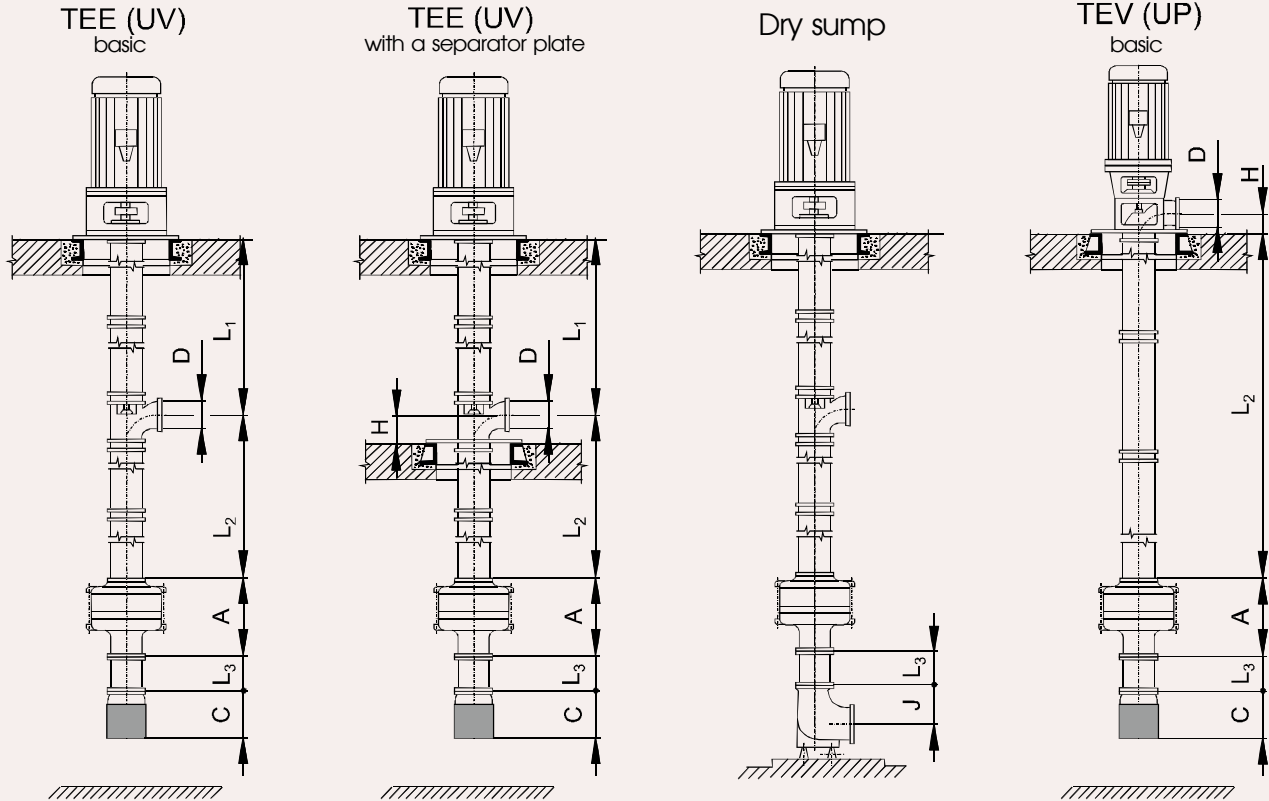
CVFV

MATERIAL SPECIFICATION

Part name	LN	LU
suction body	EN-GJL-250	EN-GJL-250
impeller body	EN-GJL-250	EN-GJL-250
discharge body	EN-GJL-250	EN-GJL-250
transducer	EN-GJL-250	EN-GJL-250
diffuser	EN-GJL-250	EN-GJL-250
impeller	EN-GJL-200	X20Cr14 (DIN)
seal ring	EN-GJL-200	3346-HM
shaft	1.0503	1.0503



BASIC DIMENSIONS



Size	Number of stages	DN	Pump Dimensions						
			A	L ₁ min/max	L ₂ min/max	L ₃ min/max	H	C	J
150-CVFV-265	1	150	376	1185/4685	1220/13220	250/2000	250	450	220
	2	150	552	1185/4685	1220/13220	250/2000	250	450	220
200-CVFV-305	1	200	418	1185/4685	1255/13255	250/2000	290	450	220
	2	200	622	1185/4685	1255/13255	250/2000	290	450	220
250-CVFV-350	1	250	458	1235/4735	1300/13300	250/2000	340	500	250
	2	250	691	1235/4735	1300/13300	250/2000	340	500	250
300-CVFV-400	1	300	543	1285/4785	1355/13355	250/2000	400	670	370
	2	300	808	1285/4785	1355/13355	250/2000	400	670	370
350-CVFV-460	1	350	640	1280/4780	1350/13350	250/2000	400	670	350
	2	350	945	1280/4780	1350/13350	250/2000	400	670	350
	3	350	1250	1280/4780	1350/13350	250/2000	400	670	350
400-CVFV-530	1	400	735	1280/4780	1400/13400	250/2000	460	754	450
	2	400	1085	1280/4780	1400/13400	250/2000	460	754	450
	3	400	1435	1280/4780	1400/13400	250/2000	460	754	450
500-CVFV-600	1	500	630	1310/4810	1440/13440	250/2000	500	754	450
	2	500	1228	1310/4810	1440/13440	250/2000	500	754	450
600-CVFV-700	1	600	860	1400/4900	1560/13560	250/2000	640	870	580
	2	600	1313	1400/4900	1560/13560	250/2000	640	870	580

SEAL DESIGN

- soft cord packing, non-flooded

MOTORS

- flange-mounted electric motor drive
- driving force transmitted using a flexible coupling

CROSS-SECTION DRAWING

